



News@theLibrary

Hōngongoi July 2024

Library Hours

Mon-Fri 8am-5pm
Sat noon-4pm
Library is closed on Sundays
and public holidays

[Apply](#) for afterhours access

[Library Hub](#)

After hours fob
access to the
Library.

Visit the Library to
apply for 24/7
access.
Conditions apply.

Contact the Library

Phone: 07 8398880

Ext: 98880

library@waikatodhb.health.nz

Inside this issue

- Academic Writing Workshop
- Managing change-blogpost
- Acute kidney injury-podcast
- [Find videos](#) on your topic
- [Keeping up to date](#)—email alerts to latest journal publications
- [Four highly ranked diabetes journals](#)-full text access
- [Dealing with bosses](#) who are critical, give feedback badly
- [AI tools for clinicians](#), two article to request plus more
- [NZ study, diabetes related lower extremity amputations](#)
- [New ebooks](#)
- [New print books](#)

Te Whatu Ora

[Health New Zealand](#)

Waikato

Doing Post Grad? Workshop opportunity



- Develop assignment writing skills
- Find out about available support
- Learn literature searching and referencing skills

Workshop Dates (select preferred date)

1 August:	12.30pm - 2.30pm	Library Meeting Room 2
13 August:	12.30pm - 2.30pm	Bryant Education Centre LG8

Co-ordinator: Karen Nixey

[Book on Ko Awatea LEARN](#)

Blogpost and Podcast

Why Change Makes Things Worse Before It Makes Things Better



Five reasons why change gets harder before it gets better.
It's hard but you're great—Go into change with pragmatic optimism
Alicia McKay blogpost-[read more](#)

Acute Kidney Injury; Roadside to Resus



“Acute Kidney Injury is common, complicated and holds significant morbidity and mortality...In this episode we run through the anatomy, physiology and aetiologies”.
[Listen](#) to a Resus Room podcast.

Find videos on your topic

Click on Catalogue on the Library hub. Type "video" and a topic keyword in the search box.



Keeping up to date

Get emails when new issues of your favourite journals are published—with links to the full text!

Just three simple steps to activate a journal alert.



Interested?

[Request more information.](#)

Four highly ranked diabetes journals

Online access to the latest issue.

- [Diabetes Care](#)
- [Lancet Diabetes & Endocrinology](#)
- [Diabetes and Metabolic Syndrome: Clinical Research and Reviews](#)
- [Diabetologia](#)



Other journals include:

[Diabetic Foot Journal](#), [Journal of Diabetes Nursing](#) and [Journal of Diabetes and Its Complications](#)

Te Whatu Ora
Health New Zealand

Waikato

Dealing with critical, aggressive or insincere bosses

What is the best way to respond to bosses who are overly critical, or who provide bad feedback.



[Request "How to work for an overly critical boss"](#)

If it feels like every task, no matter how small, seems to invite scrutiny., read this article to find out how to navigate this type of boss so your life is less stressful..

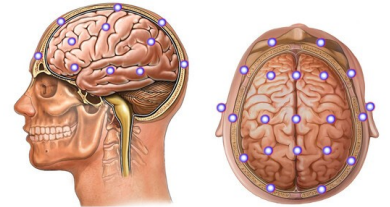
[Request "What to do when a boss gives bad feedback—badly."](#)

Read about the three most common mistakes managers make when delivering feedback -- and how to respond.

AI, tools for clinicians

[Request the following NEJM AI articles:](#)

- "Improving Clinician Performance in Classifying EEG Patterns on the Ictal–Interictal Injury Continuum Using Interpretable Machine Learning."
- "Artificial Intelligence–Powered Rapid Identification of ST-Elevation Myocardial Infarction via Electrocardiogram (ARISE) — A Pragmatic Randomized Controlled Trial."



AI enabled electrocardiogram (AI-ECG) has shown potential for the accurate and timely detection of STEMI on 12-lead electrocardiograms (ECGs). However, its impact on clinical treatment times is unknown.

Harrison's online update:

[Request "Current AI algorithms cannot replace infectious disease physicians"](#).

Diabetes-related lower extremity amputations

[Request article "Audit of diabetes-related lower extremity amputations in the Northern Region of New Zealand 2013–2016"](#)

New Zealand Medical Journal 5 July 2024



An audit undertaken in northern New Zealand found that higher rates of DRLEA admission rates for Māori and males is consistent with other studies. However, the finding of high rates for Pacific people is new. The study identified a need to improve referral of acute diabetes foot problems to expert podiatrist care.

Open access to New Zealand Medical Journal

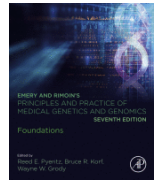
24/7 access to online content from 1999 to present

The [New Zealand Medical Journal](#) offers free open access to all individuals that subscribe to the journal.

New ebooks

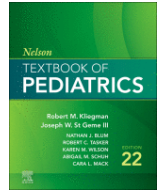
[Emery and Rimoin's Principles and Practice of Medical Genetics and Genomics: Foundations](#)

"...latest information on seminal topics such as prenatal diagnosis, genome and exome sequencing, public health genetics, genetic counseling, and management and treatment strategies to complete its coverage of this growing field for ...[those] involved in the care of patients with genetic conditions..."



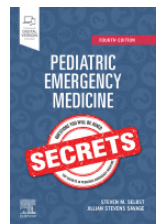
[Nelson Textbook of Pediatrics 22nd edition](#)

"Covering every aspect of general pediatric practice, as well as details for many pediatric subspecialists, [the ebook] brings you fully up to date with everything from rapidly changing diagnostic and treatment protocols to new technologies to the wide range of biologic, psychologic, and social problems faced by children today..."



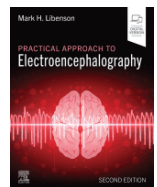
[Pediatric Emergency Medicine Secrets](#)

"... features the Secrets' popular question-and-answer format that also includes lists, tables, pearls, memory aids, and an easy-to-read style – making inquiry, reference, and review quick, easy, and enjoyable."



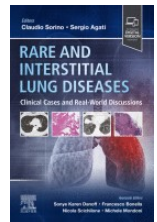
[Practical Approach to Electroencephalography](#)

"... explaining EEG waveforms starting with the basics, then bringing you to a sophisticated level in interpreting EEG tracings—explaining what to do, what not to do, what to look for, and what the results mean. Emphasizing pattern recognition and also why the patterns look the way they do, ... focuses on the types of EEG tracings you are likely to encounter in your EEG laboratory, both in the outpatient lab and in the ICU ..."



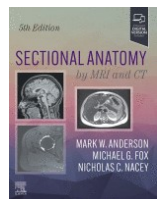
[Rare and Interstitial Lung Diseases](#)

"... brings you up to date with the latest advances in complex or rare lung diseases managed on outpatient or inpatient respiratory or critical care units. Using a unique, case-based approach, a wide variety of cases are presented along with perspectives from a multidisciplinary team of experts who discuss therapeutic choices and rationales..."



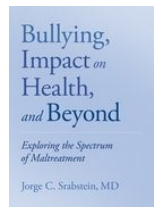
[Sectional Anatomy by MRI and CT](#)

"... New coverage of the cervical spine, brain, and thumb, as well as new on/off labels in the eBook version make this title an essential diagnostic tool for both residents and practicing radiologists."



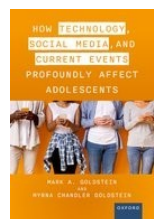
[Bullying, impact on health, and beyond : exploring the spectrum of maltreatment](#)

"... this book was primarily aimed at fostering the role of health and public health practitioners in developing strategies for the prevention and detection of bullying and treatment of its associated health risks...."



[How technology, social media, and current events profoundly affect adolescents](#)

"... examines 18 contemporary issues and their impact on the biological, psychological, and social domains in adolescents ... it reviews biological issues that include sleep, obesity, and stress. The mental health section contains chapters on anxiety, depression, eating disorders, substance use, and suicidality/self-harm. In the section on social issues, cyberbullying, problematic internet use, racism/discrimination, LGBTQ, transgender and gender dysphoria, poverty, divorce, and bereavement and mortality are studied. An analysis of current events including the COVID pandemic and war completes the book."



Te Whatu Ora

Health New Zealand

Waikato

New print books

[request a new book](#)

Title	Author	Classification
He awa whiria : braiding the knowledge streams in research, policy and practice	Macfarlane, Angus H, Derby, Melissa, Macfarlane, Sonja	H62 .A964 2024
Mastering medical terminology	Walker, Sue,, Wood, Maryann, Nicol, Jenny,	W15 .W184 2021
Medicine at a glance— request book	Davey, Patrick,, Pitcher, Alex	WB102 .M489 2024
Microsoft Office inside out (Office 2021 and Microsoft 365)	Habraken, Joseph W	HF5548.4 .M525 H113 2022
Old black cloud : a cultural history of mental depression in Aotearoa New Zealand	Leckie, Jacqueline	WM75 .L461 2024
Oral dermatology : a practical guide for dermatologists and medical practitioners	Prabhu, S.R, Oakley, Amanda M. M., Yeoh, Sue-Ching	WR140 .P895 2024
Oxford handbook of clinical medicine	Wilkinson, Ian, Raine, Tim,, Wiles, Kate,, Hateley, Peter, Kelly, Dearbhla, McGurgan, Iain	WB102 .O98 2024
Psychiatry : an illustrated colour text	Stevens, Lesley., Rodin, Ian.	WM100 .S944 2024
Solution-focused therapy— request book	Murphy, John J	WM420.5 .P5 M978 2024
Textbook of women's reproductive mental health	Hutner, Lucy A., Catapano, Lisa A., Nagle-Yang, Sarah M., Williams, Katherine E., Osborne, Lauren M.	WA309 .T355 2022
The child protection handbook	Clawson, Rachael, Warwick, Lisa, Fyson, Rachel	HV751 .A6 C536 2024
We are still here : what counsellors and therapists can learn from the lived experience of child sexual abuse survivors	Sanderson, Christiane,	WA325 .S216 2024